

# WARRIOR RACE 2023



**HOSPITALITY SETUP OPTIONS**

*Virgin*  
active  
**WARRIOR**



# HOSPITALITY OPTIONS

## PREMIUM

- Tent
- Picket Fencing
- Decorated Tables & Chairs Bean Bags
- Catered Lunch
- Refreshments (Ice bath with refreshments in the tent)

## STANDARD

- Tent
- Picket Fencing
- Tables & Chairs
- Lunch (Options from vendors)
- Refreshments (Bar tokens)

## BASIC

- Tent
- Picket Fencing
- Tables & Chairs

Virgin  
active  
**WARRIOR**





<b>TENT PORTION</b>	R78/sqm	<b>+/- 75 sqm per 20 ppl</b>
<b>PICKET FENCING</b>	R42/m	<b>+/- 50 m per 20 ppl</b>
<b>PALLET TABLE (X2 STACKED)</b>	R108	
<b>BEAN BAG</b>	R90	
<b>GALVANIZED ICE BATH</b>	R72	
<b>FOOD TABLE</b>	R54	
<b>SECURITY GUARD</b>	R500	

# SETUP

**SETUP FEE = R400**



**ICE**

**R65 (10kg  
solid block)**

**R30 (4kg bag)**

**HYPE ENERGY DRINK**

**R22**

**MIN 6**

**WATER (500ML)**

**R10**

**MIN 6**

**SAVANNA DRY/LIGHT (330ML)**

**R22**

**MIN 6**

**CASTLE LIGHT (440ML)**

**R20**

**MIN 6**

**BLACK LABEL (340ML)**

**R20**

**MIN 6**

**BRUTAL FRUIT (275ML)**

**R20**

**MIN 6**

**CATERING**

# FOOD OPTIONS

Prices and food options to be provided on request, as this would differ for each event.

Food options will include:

- Burgers
- Pizza
- Boerewors rolls
- Sandwiches
- Pies



# MERCHANDISE - YOUR OWN DESIGN

<b>CAP (UVLEX/ FLEXFIT)</b>	<b>R200</b>	<b>MIN 20</b>
<b>BATH TOWEL</b>	<b>R180</b>	<b>MIN 20</b>
<b>HAND TOWEL</b>	<b>R130</b>	<b>MIN 20</b>
<b>GUEST TOWEL</b>	<b>R80</b>	<b>MIN 20</b>
<b>SOX</b>	<b>R120</b>	<b>MIN 50</b>

*Virgin* active  
**WARRIOR**



# MERCHANDISE - DESIGN YOUR OWN T-SHIRT

<b>SETUP FEE</b>	R360
<b>FIRST PRINT</b>	R36
<b>PRINTS AFTER FIRST PRINT</b>	R12
<b>PROMO T-SHIRT (145 GSM)</b>	R65
<b>CLASSIC SHIRT (165 GSM)</b>	R95

SET-UP FEE  **R360** **+** **(** PRINT FRONT  **R36** **+** PRINT BACK  **R12** **+** T-SHIRT  **R95** **×** QUANTITY  **20** **)**

# CLASSIC T-SHIRT (165 GSM)



Taped shoulders  
and neckline

100% Combed cotton

(Grey melange is a blend  
of 93% cotton and 7%  
polyester)

Side seams

Double stitched hem  
on waistline, sleeves  
and armhole

## AVAILABLE COLOURS:



BLACK

CHARCOAL

BOTTLE

BURGUNDY

ROYAL

NAVY

CHOCOLATE

GREY

GREY  
MELANGE

PURPLE

STONE

LIME

EMERALD

TURQUOISE

RED

OLIVE

BLUE

PINK

ORANGE

YELLOW

WHITE



# PROMO T-SHIRT (145 GSM)

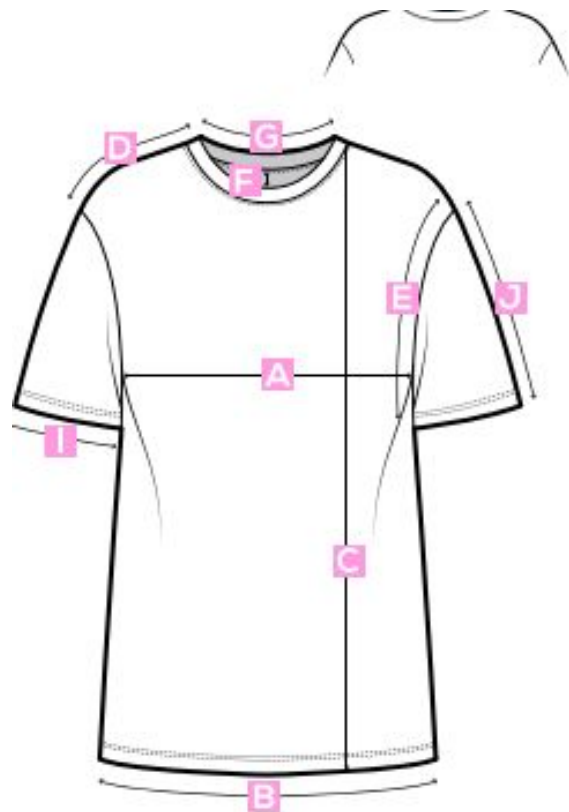


## AVAILABLE COLOURS:



# SIZES

	XS	S	M	L	XL	2XL	3XL	4XL
<b>A</b> Half chest	47	50	53	57	61	65	69	73
<b>B</b> Half hem	47	50	53	57	61	65	69	73
<b>C</b> NSP length	69	71	73	75	77	79	81	83
<b>D</b> Shoulder seam	12	12.5	13	13.5	14	14.5	15	15.5
<b>E</b> Half armhole straight	22	23	24	25	26	27	28	29
<b>F</b> Neck drop	7	7	7	7	7	7	7	7
<b>G</b> Back neck inner	18	18.5	19	19.5	20	20.5	21	21.5
<b>H</b> Back drop	2	2	2	2	2	2	2	2
<b>I</b> Sleeve opening	16	17	18	19	20	21	22	23
<b>J</b> Sleeve length	20	21	22	23	24	25	26	27



# SOX

## CREW SOCKS - DTG PRINTED | 16CM ABOVE SHOE | UNDER THE CALF



High-quality DTG print that is guaranteed not to fade or wash out



A Y-heel creates extra support around the heel and prevents slipping



Standard with a padded heel & toe for extra comfort



A seamless "hole proof" toe, to prevent blisters and ensure all-day comfort



Made from a soft and durable synthetic fibre developed by us



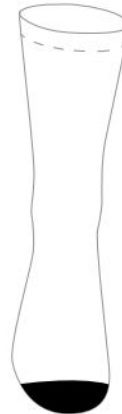
Small minimum quantity and quick lead times



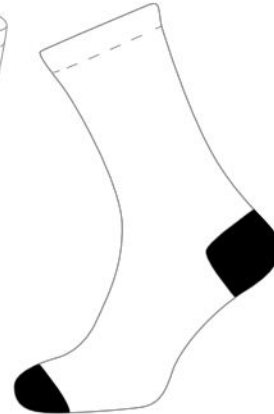
The heel and toe will always be black



Vector logos and design work are needed



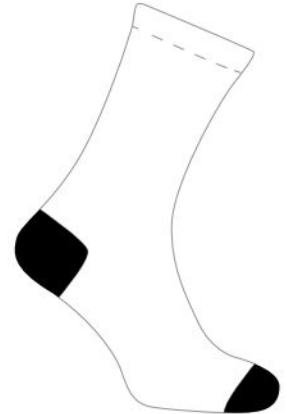
FRONT



SIDE 1



BACK



SIDE 2

SMALL			MEDIUM			LARGE		
UK 12-3	EU 32-36	USA 1-4	UK 4-7	EU 37-41	USA 5-8	UK 8-12	EU 42-47	USA 9-13